

# **Homicide/Violence**

**By**

**Bruce W. Randolph, MD,MPH**

# LEADING CAUSES OF DEATH WITH RATES PER 100,000 POPULATION IN THE SHELBY COUNTY HEALTH REGION, BY RACE, RESIDENT DATA, 2020

CAUSE	TOTAL				WHITE				BLACK				
	RANK	NUMBER	RATE	AGE ADJUSTED RATE	RANK	NUMBER	RATE	AGE ADJUSTED RATE	RANK	NUMBER	RATE	AGE ADJUSTED RATE	
DISEASES OF HEART	1	2,108	225.2	210.4	1	878	230.8	163.3	1	1,211	237.7	259.4	
MALIGNANT NEOPLASMS	2	1,648	176.1	160.3	2	708	186.1	134.2	2	901	176.9	189.5	
COVID-19	3	952	101.7	95.4	4	349	91.7	65.4	3	580	113.9	126.1	
ACCIDENTS AND ADVERSE EFFECTS	4	902	96.4	98.7	3	382	100.4	95.3	4	484	95.0	99.9	
CEREBROVASCULAR DISEASE	5	495	52.9	50.0	6	200	52.6	37.0	6	288	56.5	64.8	
ALZHEIMER'S DISEASE	6	349	37.3	37.5	5	238	62.6	43.3	13	109	21.4	29.8	
ASSAULT (HOMICIDE)	7	327	34.9	36.4	17	23	6.0	6.3	5	292	57.3	57.9	
CHRONIC LOWER RESPIRATORY DISEASES	8	322	34.4	31.8	7	190	49.9	34.6	9	131	25.7	28.2	
DIABETES MELLITUS	9	300	32.1	29.5	9	87	22.9	16.7	7	209	41.0	44.4	
PNEUMONIA AND INFLUENZA	10	227	24.3	23.0	8	108	28.4	19.9	10	118	23.2	26.8	
SEPTICEMIA	11	204	21.8	20.2	10	81	21.3	15.4	10	118	23.2	25.5	
HYPERTENSION AND RENAL DISEASE	12	184	19.7	18.7	14	49	12.9	9.1	8	133	26.1	31.2	
TOTALS SUMMARIZE EVENTS WITH RACE OTHER THAN WHITE OR BLACK AND INCLUDE 'NOT STATED' OR 'UNKNOWN'.													

SOURCE: TENNESSEE DEATH STATISTICAL FILE, 2020, TENNESSEE DEPARTMENT OF HEALTH, DIVISION OF VITAL RECORDS AND STATISTICS. RATES CALCULATED BASED ON TOTAL POPULATION COUNTS FROM THE TENNESSEE POPULATION ESTIMATES PROGRAM, 2020, TENNESSEE DEPARTMENT OF HEALTH, DIVISION OF POPULATION HEALTH ASSESSMENT.

# Homicide Deaths in Shelby County, TN 2020

**5<sup>th</sup>** Leading cause of death among Blacks

VS

**17<sup>th</sup>** Leading cause of death among Whites

# Homicide Deaths in Shelby County, TN 2020

Total homicide deaths: **327**

Black homicide deaths: **292** (89%)

White homicide deaths: **23** (7.0%)

Black Age Adjusted Rate: **57.9**/100,000

White Age Adjusted Rate: **6.3**/100,000

Homicide Rate for Blacks is **9X** that of Whites



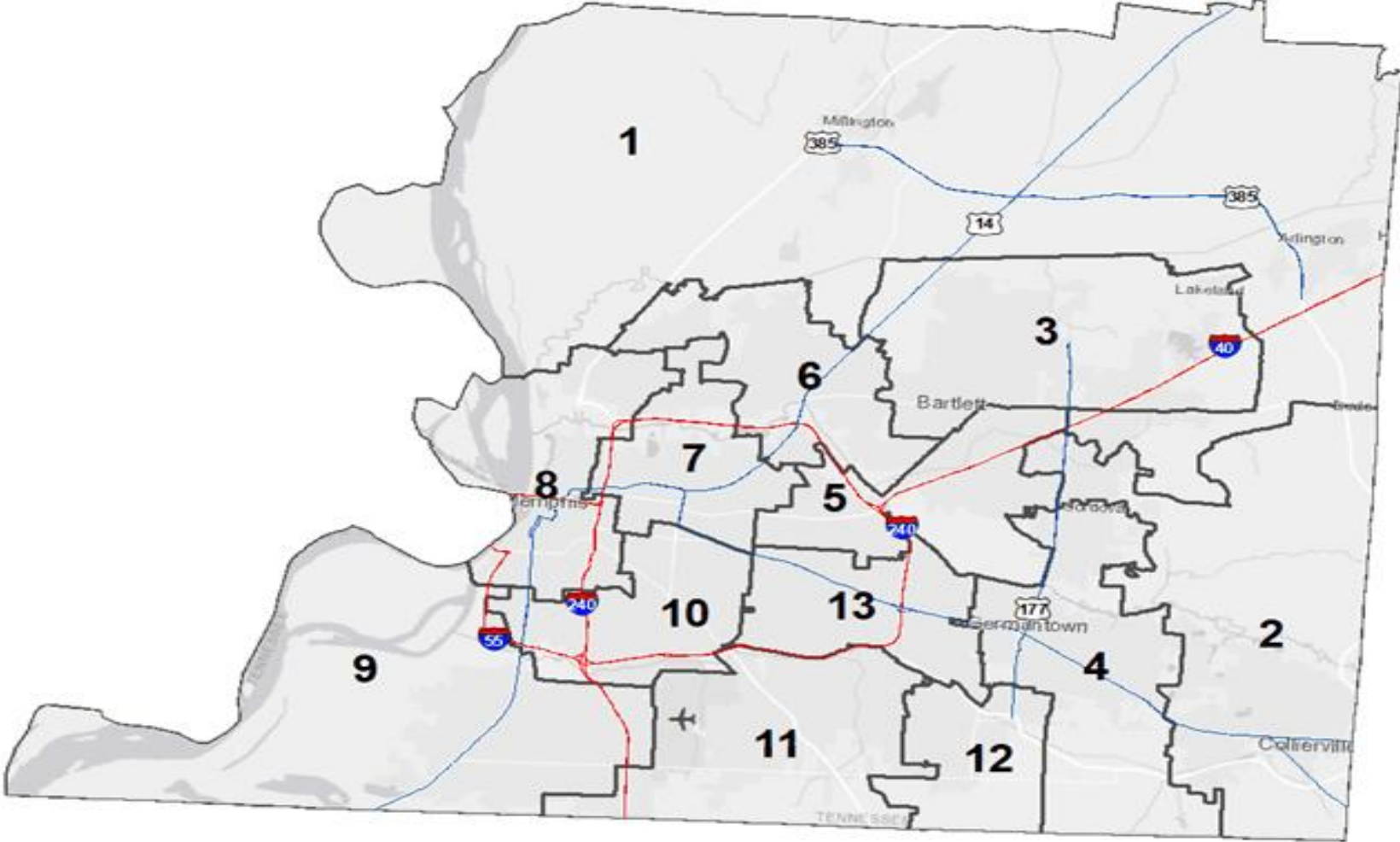
# **Homicide Deaths** By County Commission Districts 2017

County Commission **Districts 2** had the lowest homicide rate  
**5.2/100,000**

County Commission **District 10** had the highest homicide rate  
**127.5/100,000**

**Only one County Commission District (District 2) has a homicide rate  
which is less than the rates for the State and Nation**

# Shelby County Commission Districts



Shelby County Homicide Assault Death Statistics, 2017 Death by Assault by District, 2017, Shelby County Health Department

# Shelby County Commission District 2

**Collierville** and portions of unincorporated areas of Shelby County **surrounding Collierville.**

Had the **lowest Homicide Rate (5.2/100,000)**

# Shelby County Commission District 10

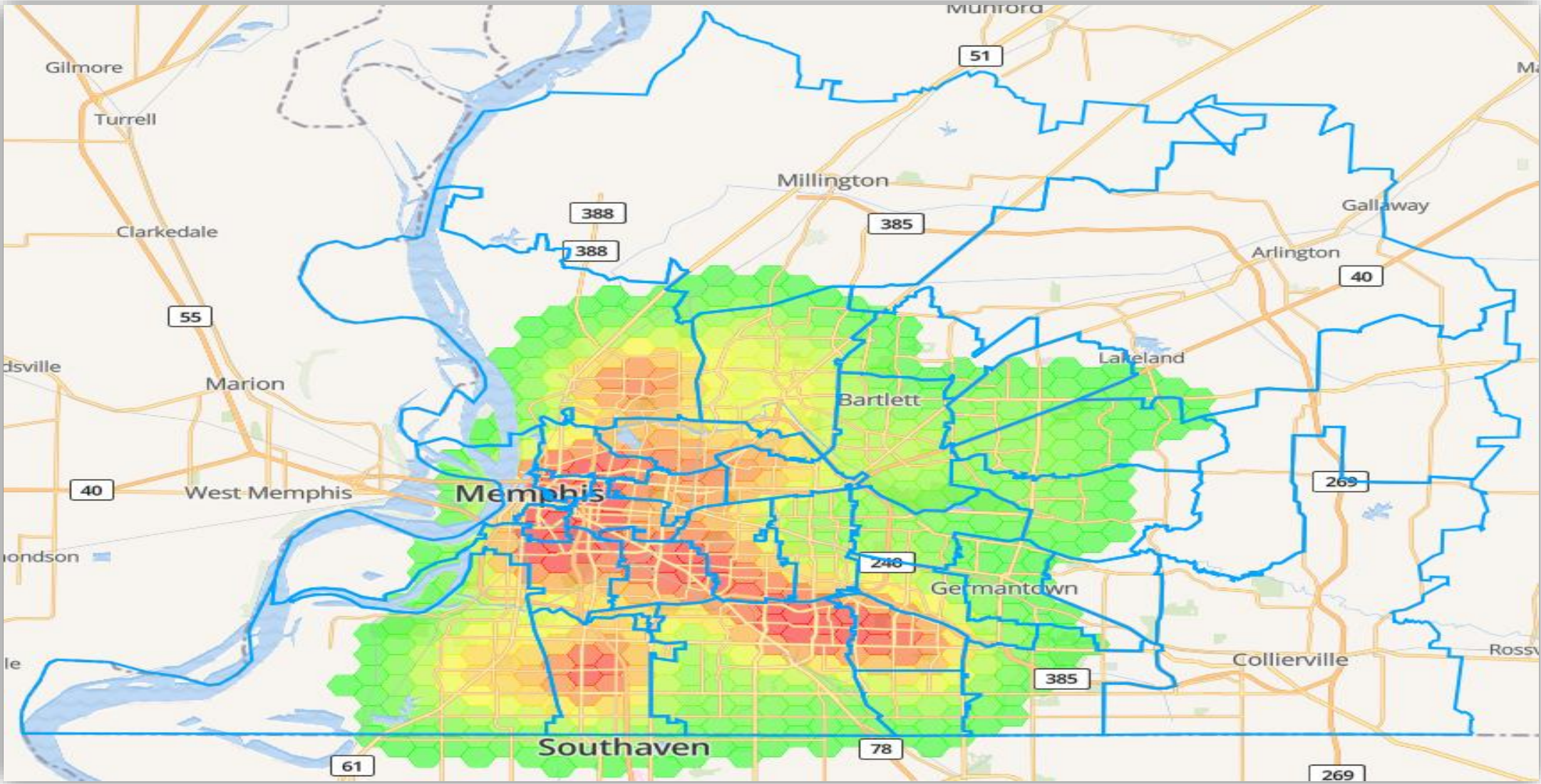
**South Memphis**, Central Gardens, Chickasaw Gardens, Cooper-Young, Midtown, **Orange Mound**, and Overton Square.

Had the **highest** Homicide Rate (**127.5/100,000**)

## Homicide Rate in County Commission District 10 (127.5/100,000)

- 25 times higher than that of District 2 (5.2/100,000)
- 6 times higher than Shelby County (20.8/100,000)
- 15 times higher than the State of Tennessee (8.3/100,000)
- 20 times higher than the United States (6/100,000)

# Where is the most violent crime happening in Memphis?



(Violent Crime includes Murder, Aggravated Assault, Aggravate Assault/DV, Carjacking)

Source: Memphis Public Safety data, 2021; ACS 5-Year population estimates, 2021 Rate based on Memphis Public Safety Map Pins, which are based on initial crime reports for MPD only





# Violence & Shelby County, 2021

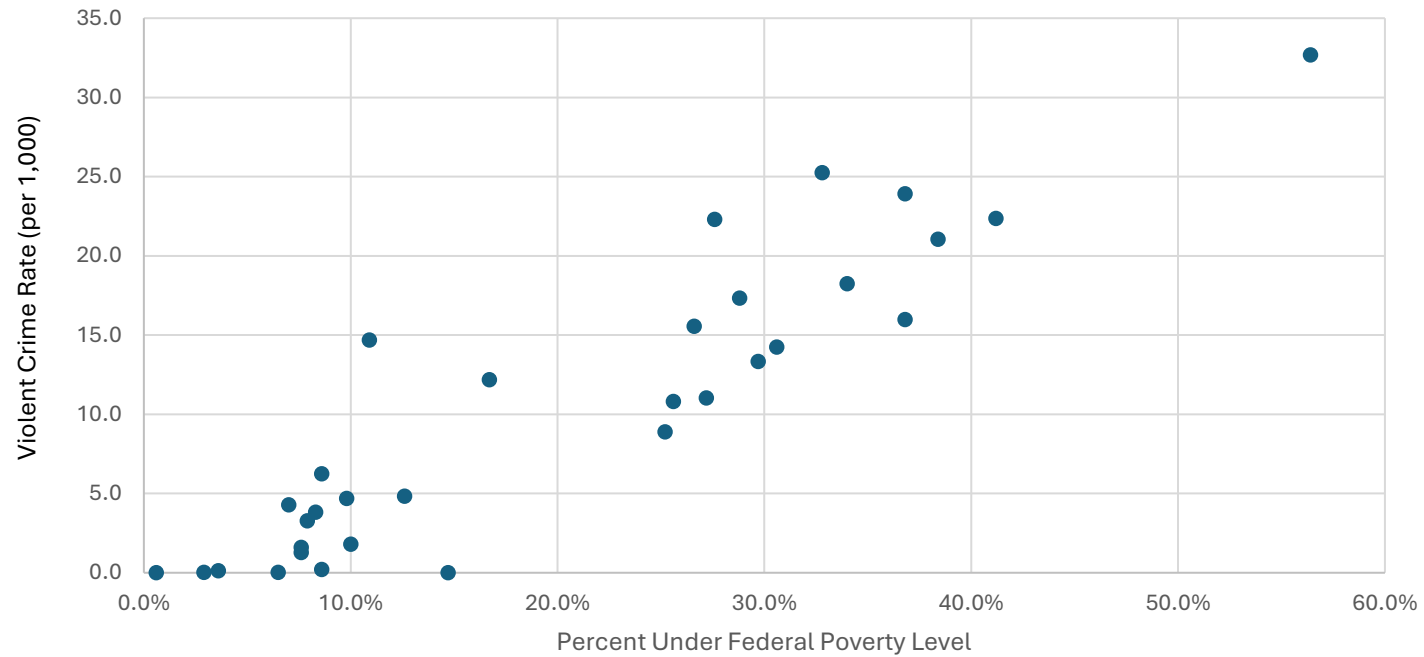
Rates (per 100,000)	Tennessee	Shelby County	County Ranking
Overall Crime Rate	7,259	12,396	1 <sup>st</sup>
Violent Crime <small>(includes Murder, Forcible Rape, Forcible Sodomy, Sexual Assault w/Object, Forcible Fondling, &amp; Aggravated Assault)</small>	645	1,637	1 <sup>st</sup>
Murder	10	34	1 <sup>st</sup>
Sex Offenses, Non-Consensual <small>(includes Forcible Rape, Forcible Sodomy, Sexual Assault w/Object, Forcible Fondling)</small>	84	88	21 <sup>st</sup>
Aggravated Assault	552	1,515	1 <sup>st</sup>
Domestic Violence Victimization Rate	961	1,863	1 <sup>st</sup>

Source: TN Incident Based Reporting System (TIBRS), 2021. Prepared by the Shelby County Health Department Office of Epidemiology.

# Who is most at-risk economically to be a victim of violent crime in Memphis?

As the poverty level increases, the crime rate increases

Correlation of Shelby County's Violent Crime Rate and Percent Under Poverty Level by Zip code, 2021



(Violent Crime Rate includes Murder, Aggravated Assault, Aggravated Assault/DV, Carjacking)

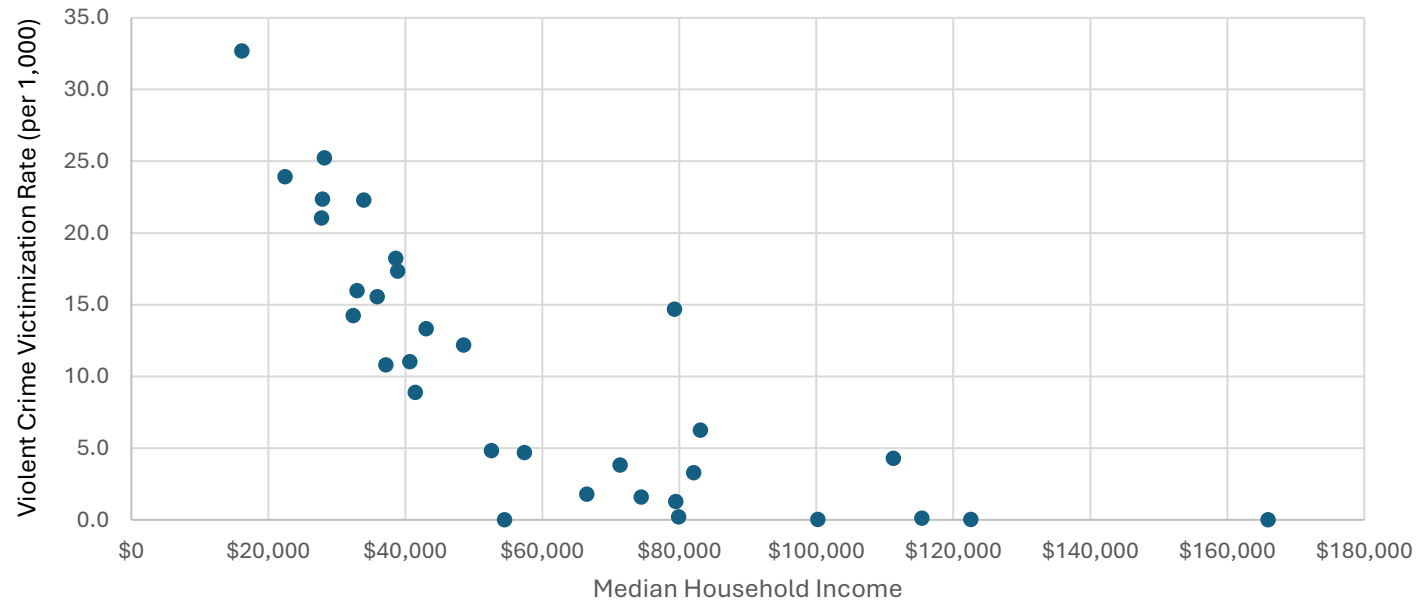
Source(s): Memphis Public Safety Map, 2022; ACS 5- year Census data

Prepared by the Shelby County Health Department Office of Epidemiology.

# Who is most at-risk economically to be a victim of violent crime in Memphis?

As the median household incomes increases, the crime rate decreases

### Correlation of Shelby County's Violent Crime Rate and Median Household Income by Zip Code, 2021

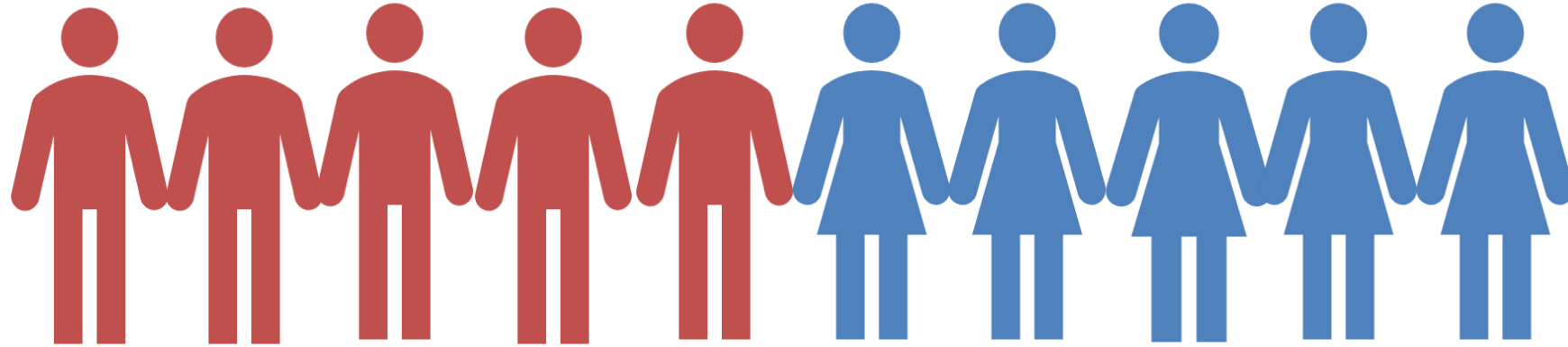


(Violent Crime includes Murder, Aggravated Assault, Aggravated Assault/DV, Carjacking)

Source(s): Memphis Public Safety Map, 2021; ACS 5-year population estimates

Prepared by the Shelby County Health Department Office of Epidemiology

# Who is most at-risk of violent crime (by Sex)?



**Males and Females Each Make Up About 50%  
of Violent Crime Victims in Shelby County**

(Violent Crime includes Murder, Forcible Rape, Forcible Sodomy, Sexual Assault w/Object, Forcible Fondling, & Aggravated Assault)

Source(s): TN Incident Based Reporting System (TIBRS), 2021. Prepared by the Shelby County Health Department Office of Epidemiology

# Violent Crime Victim Rate 2021:

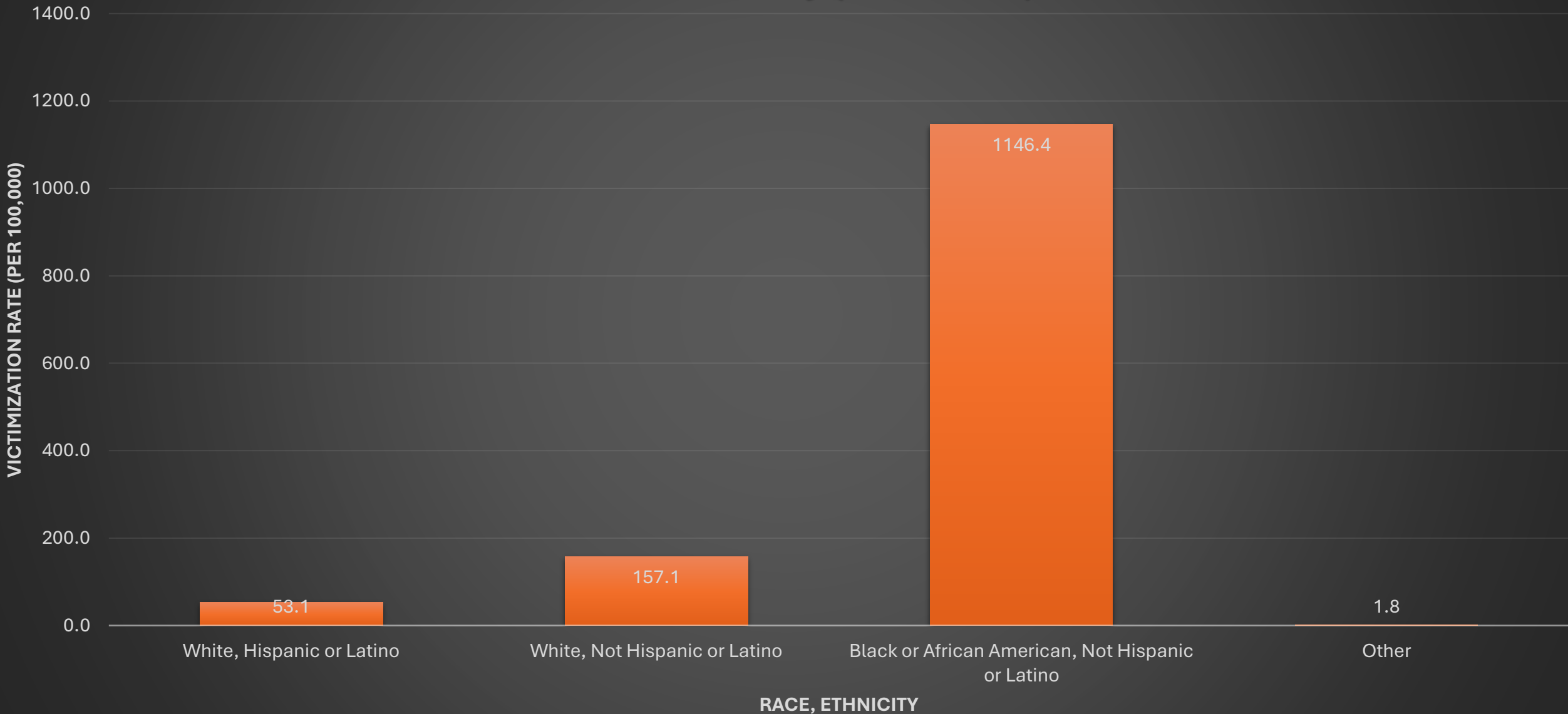
Female: **821** per 100,000

Male: **814** per 100,000

(Violent Crime includes Murder, Forcible Rape, Forcible Sodomy, Sexual Assault w/Object, Forcible Fondling, & Aggravated Assault)

Source(s): TN Incident Based Reporting System (TIBRS), 2021. Prepared by the Shelby County Health Department Office of Epidemiology

# Shelby County, TN 5-Year Violent Crime Victimization Rate by Race & Ethnicity (2017-2021)



(Violent Crime includes Murder, Forcible Rape, Forcible Sodomy, Sexual Assault w/Object, Forcible Fondling, & Aggravated Assault)

Source(s): TN Incident Based Reporting System (TIBRS), 2017-2021. Prepared by the Shelby County Health Department Office of Epidemiology

## **Violent Crime Victimization Rates (per 100,000) 2017-2021**

**Black, Not Hispanic or Latino 1146.4**

**White, Not Hispanic or Latino 157.1**

**Black Victimization Rate is 7.3 X that of White, Not Hispanic or Latino**

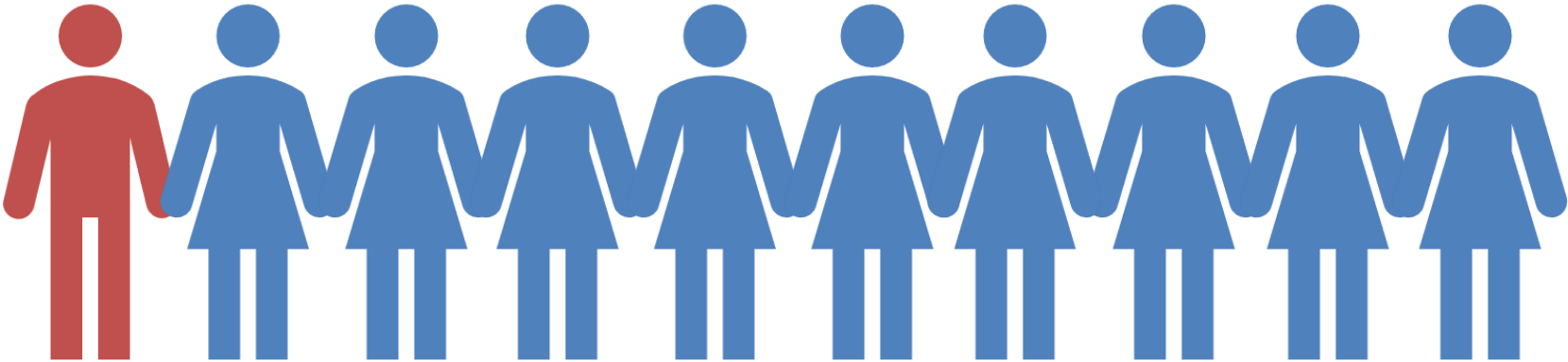
## **Violent Crime Victimization Rates (per 100,000) 2017-2021**

**Black, Not Hispanic or Latino 1146.4**

**White, Hispanic or Latino 53.1**

**Black Victimization Rate is 21.6 X that of White, Hispanic or Latino**

# Who is most at-risk of sexual offenses (by Sex)?



**9 out of 10** sex offense victims are **female** in Shelby County

(Sex offense includes Forcible Rape, Forcible Sodomy, Sexual Assault w/Object, Forcible Fondling)

Source(s): TN Incident Based Reporting System (TIBRS), 2021. Prepared by the Shelby County Health Department Office of Epidemiology.

# Sex Offense Victim Rate 2021:

Female: **80** per 100,000

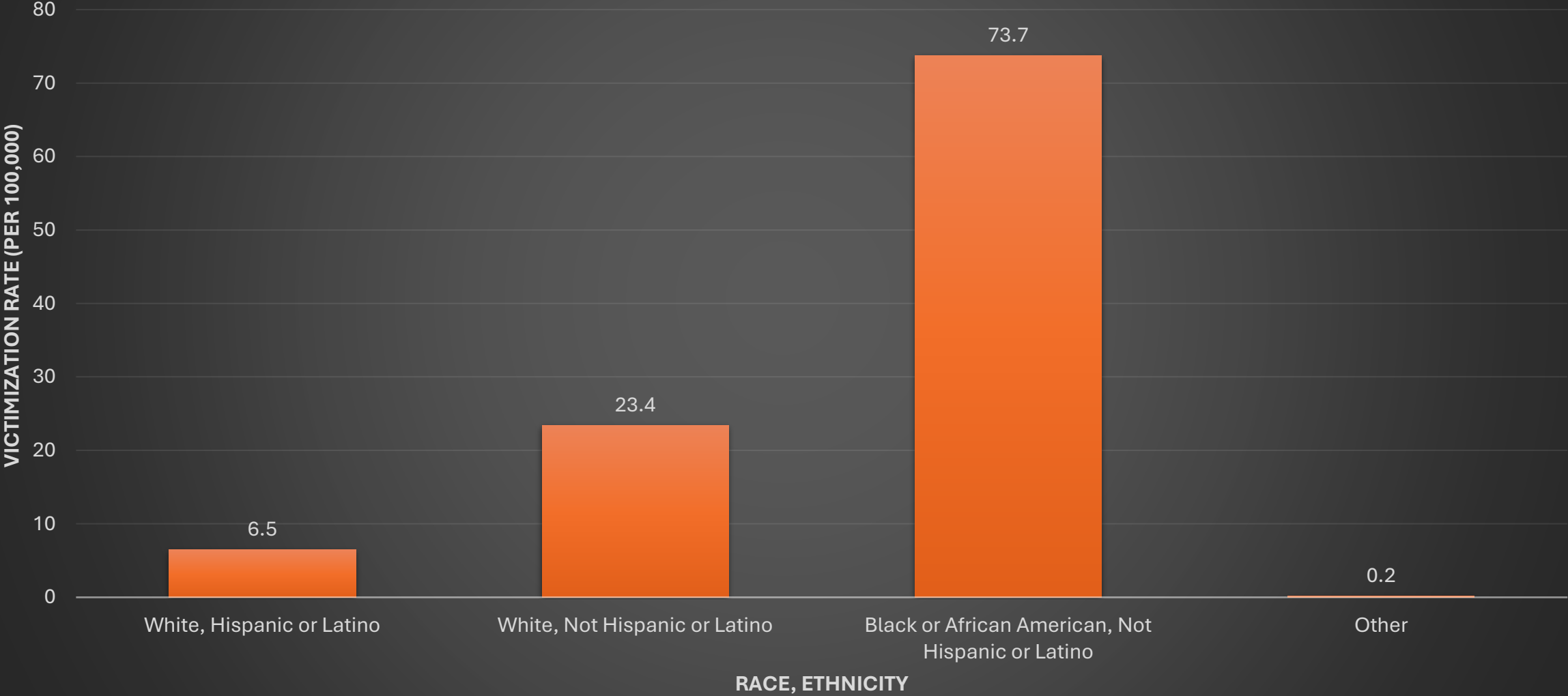
Male: **6** per 100,000

Victim Rate for Females is **13 X** higher than that of Males

(Sex offense includes Forcible Rape, Forcible Sodomy, Sexual Assault w/Object, Forcible Fondling)

Source(s): TN Incident Based Reporting System (TIBRS), 2021. Prepared by the Shelby County Health Department Office of Epidemiology.

# Shelby County, TN 5-Year Sex Offense Victimization Rate by Race & Ethnicity (2017-2021)



(Sex offense includes Forcible Rape, Forcible Sodomy, Sexual Assault w/Object, Forcible Fondling)

Source(s): TN Incident Based Reporting System (TIBRS), 2017-2021. Prepared by the Shelby County Health Department Office of Epidemiology.

## **Sexual Offense Victimization Rates (per 100,000) 2017-2021**

**Black, Not Hispanic or Latino 73.7**

**White, Not Hispanic or Latino 23.4**

**Black Victimization Rate is 3.2 X that of White, Not Hispanic or Latino**

## **Sexual Offense Victimization Rates (per 100,000) 2017-2021**

**Black, Not Hispanic or Latino 73.7**

**White, Hispanic or Latino 6.5**

**Black Victimization Rate is 11.3 X that of White, Hispanic or Latino**

# Domestic Violence Incidents Shelby County, TN

	Domestic Violence Incidents Per 1,000 Population (2022)				
Sex/Race/Ethnicity	Domestic Violence Incidents				
Overall	17.6				
Male	4.2				
Female	13.4				
Asian/Pacific Islander	0.1				
Black/African American	15.0				
Hispanic	0.8				
White	2.5				