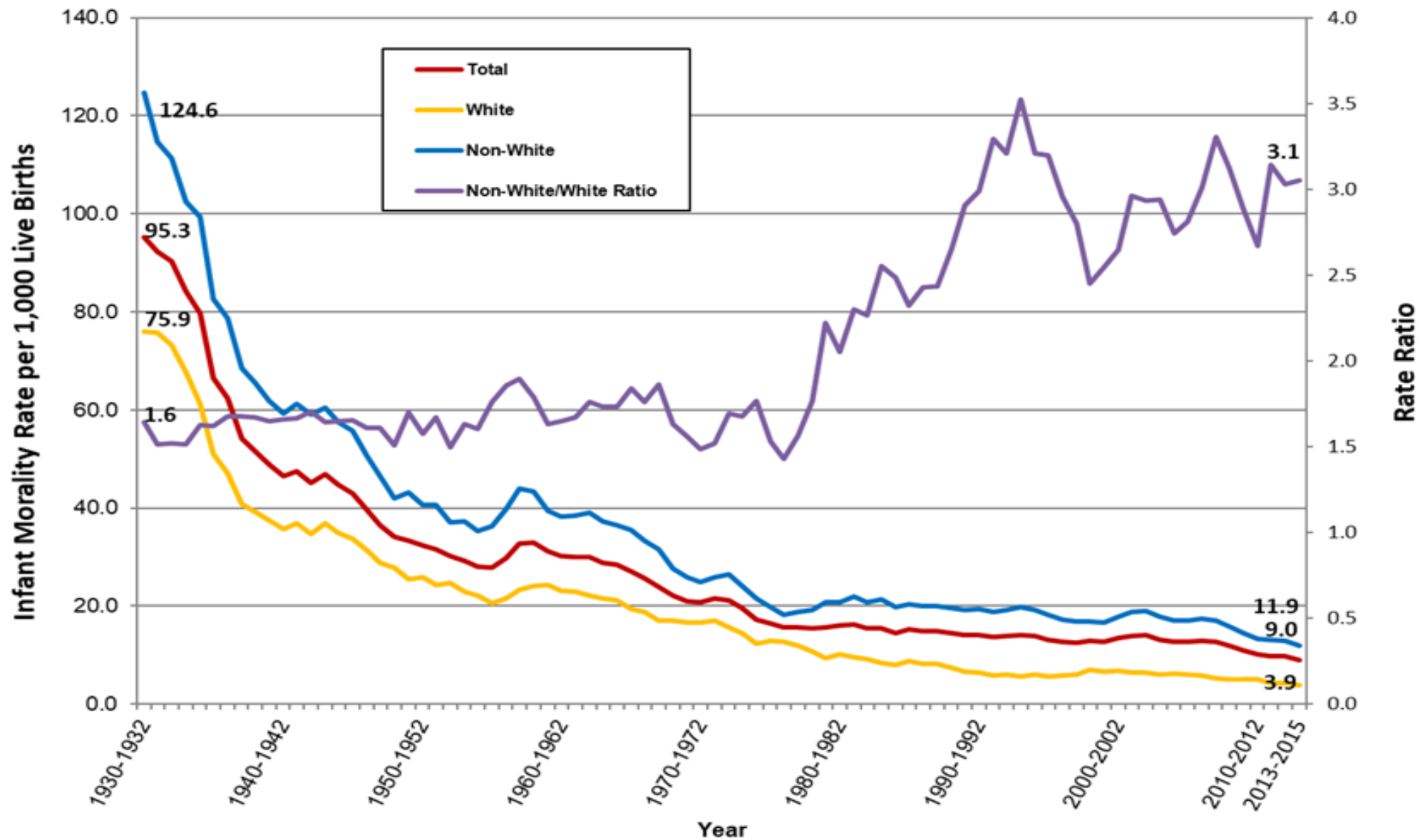


Infant Mortality Rate

(Infant Deaths per 1,000 Live Births)

Infant Mortality Rate, Shelby County, 3 yr rolling, 1930-2015



Infant Mortality Rate, Shelby County 1930-1932

Whites: **75.9** infant deaths per 1,000 live births

Non-white: **124.6** infant deaths per 1,000 live births

Non- white infant mortality rate is **1.6 X** higher than white infant mortality.

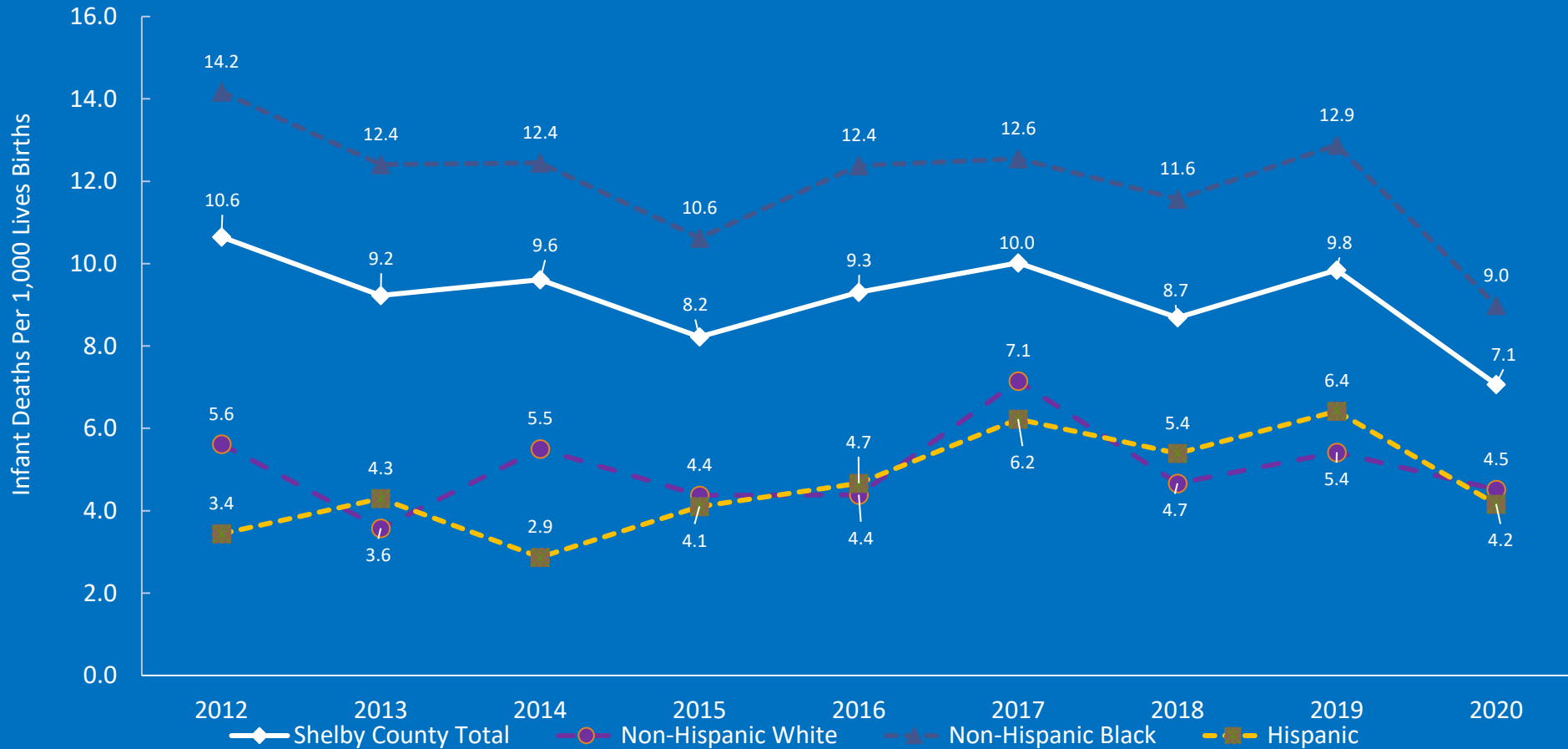
Infant Mortality Rate, Shelby County 2013-2015

Whites: **3.9** infant deaths per 1,000 live births

Non-white: **11.9** infant deaths per 1,000 live births

Non- white infant mortality rate is **3.1 X** higher than white infant mortality.

Infant Mortality Rate by Race-Ethnicity (2012 – 2020)



Data Source: Tennessee Department of Health, Office of Policy, Planning and Assessment, Division of Health Statistics, Birth and Death Certificate Files for Shelby County Residents, 2012– 2020. Use of these data does not imply TDH agrees or disagrees with any presentations, analyses, interpretations or conclusions herein. Prepared by Shelby County Health Department (SCHD), Office of Epidemiology and Infectious Diseases 09/30/2022.

Infant Mortality Rate by Race/Ethnicity

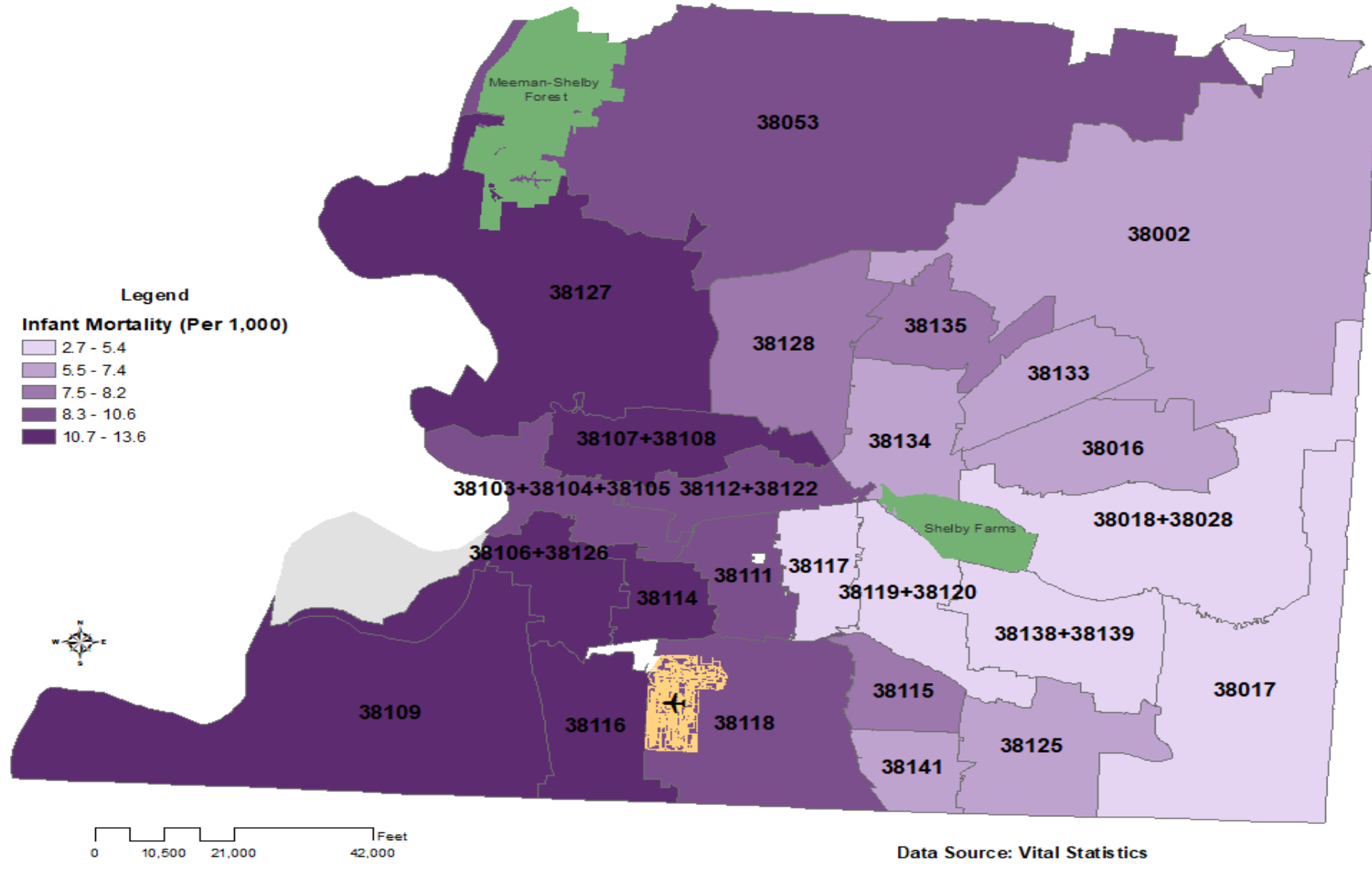
Shelby County, TN 2020

Non-Hispanic Blacks **9.0**

Hispanics **4.2**

Black Infant Mortality Rate is **2x** higher than Hispanics

Infant Mortality Rate, Shelby County, by Zip Code, 2015-2020



Data Source: Tennessee Department of Health, Office of Policy, Planning and Assessment, Division of Health Statistics, Birth and Death Certificate Files for Shelby County Residents, 2015–2020. Use of these data does not imply TDH agrees or disagrees with any presentations, analyses, interpretations or conclusions herein. Prepared by Shelby County Health Department (SCHD), Office of Epidemiology and Infectious Diseases 09/30/2022.

Top 5 Zip Codes with Highest Infant Mortality Rates

Shelby County, TN 2015-2019

38116 (Whitehaven) 13.9

38127 (Frayser) 13.8

38106 (South Memphis) 12.6

38127 (South Memphis) 12.6

38118 (Oakhaven) 11.6

Infant Mortality Rate by Zip Code

Shelby County, TN 2015 - 2020

Zip Codes with the **lowest** Infant Mortality Rate (**2.7 - 5.4**)

38138 (Germantown)

38139 (Germantown)

38017 (Collierville)

Infant Mortality Rate by Zip Code

Shelby County, TN 2015 - 2020

Zip Codes with the **lowest** Infant Mortality Rate (**2.7 - 5.4**)

VS

Zip Codes with the **highest** Infant Mortality Rate (**10.7 – 13.6**)

Difference in Infant Mortality Rate is **5X** higher

Sudden Unexpected Infant Death (SUID)

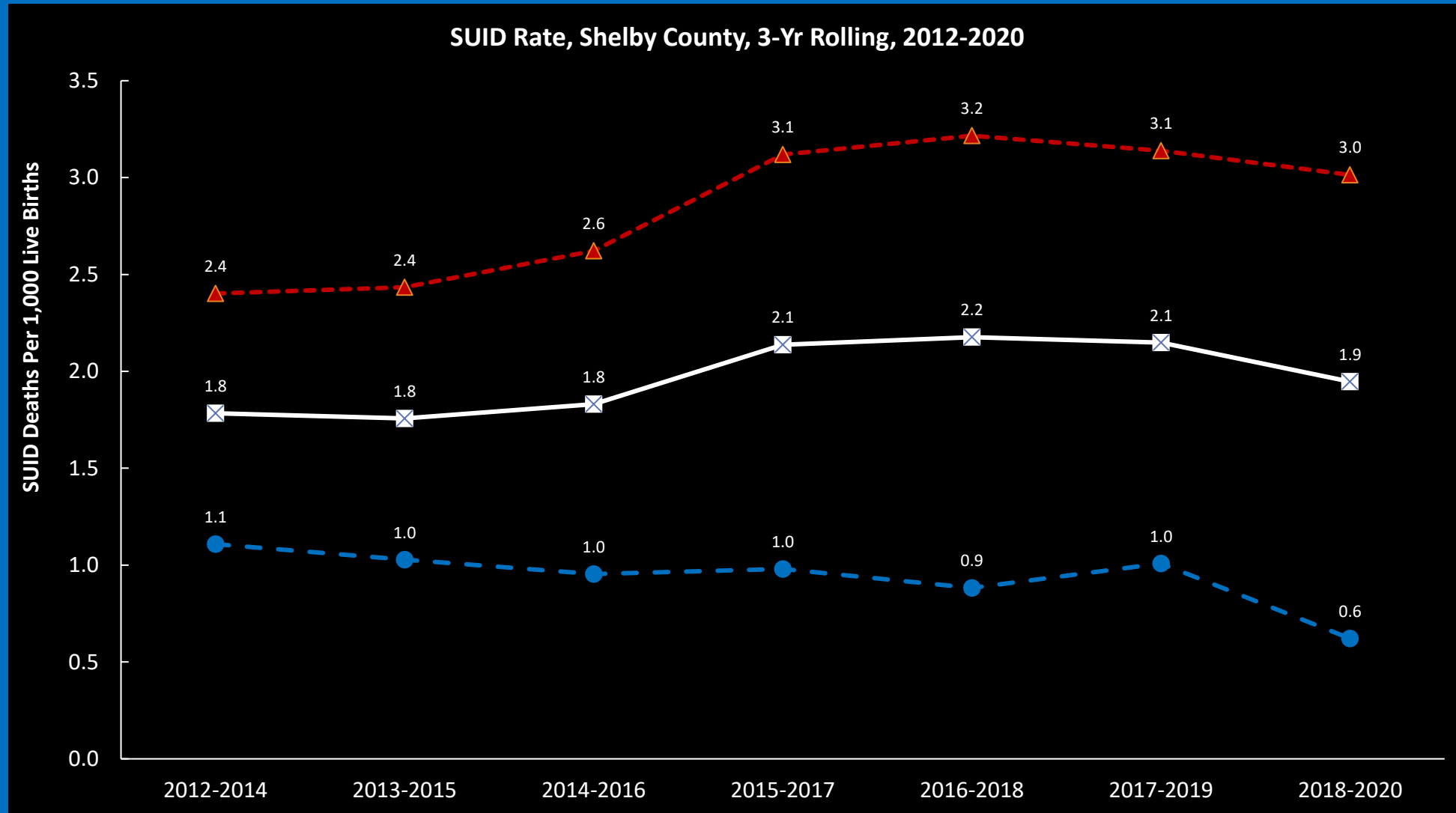
Sudden Unexpected Infant Death (SUID)

Sudden Infant Death Syndrome (SIDS)

Accidental Suffocation and Strangulation in Bed (ASSB)

Unknown deaths

Sudden Unexpected Infant Death (SUID)



Data Source: Tennessee Department of Health, Office of Policy, Planning and Assessment, Division of Health Statistics, Birth and Death Certificate Files for Shelby County Residents, 2012–2020. Use of these data does not imply TDH agrees or disagrees with any presentations, analyses, interpretations or conclusions herein. Prepared by Shelby County Health Department (SCHD), Office of Epidemiology and Infectious Diseases 9/30/2022.

Red = Black, White = Shelby County Total, Blue = White

Sudden Unexpected Infant Death (SUID) Rate 3-Yr Rolling Average, 2018-2020

SUID Rate (SUID per 1,000 Live Births)

Blacks **3.0**

Whites **0.6**

Black SUID Rate is **5X higher** than that of White

Child Mortality Rate Shelby County, TN

Child Mortality Rate (Deaths/100,000 Population Under 20) 2018-2021					
Sex/Race/Ethnicity	Child Mortality Rate				
Overall	92.4				
Male					
Female					
Asian/Pacific Islander	39.7				
Black/African American	124.5				
Hispanic	73.1				
White	41.8				
Source: https://www.healthiershelby.com/indicators/index/dashboard					

Child Mortality Rate, 2018-2021 (Deaths/100,000 Under Age 20)

Asian 39.7

White 41.8

Hispanic 73.1

Black **124.5**

Black Child Mortality Rate is **3X** that of Whites and Asians