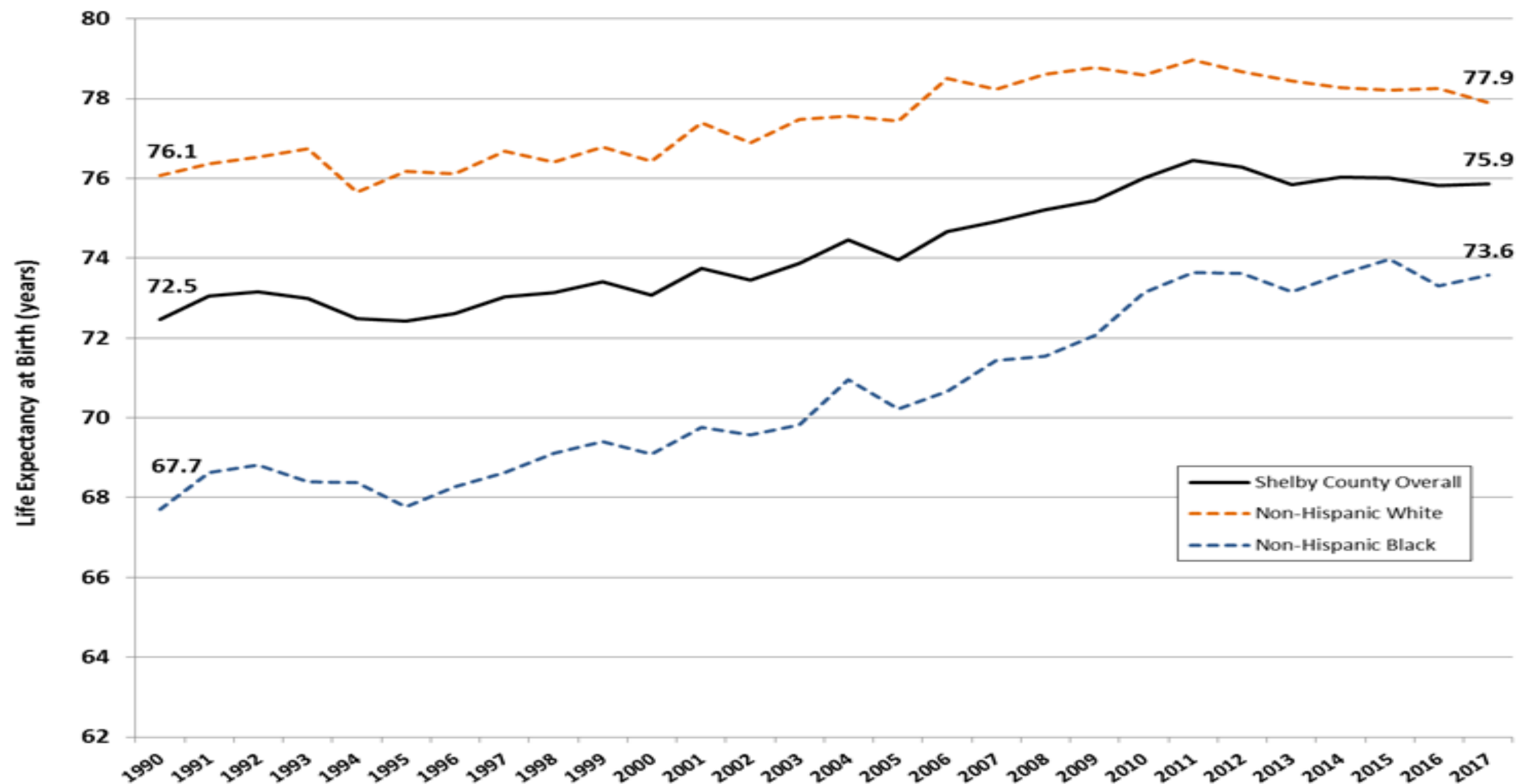


LIFE EXPECTANCY

LIFE EXPECTANCY

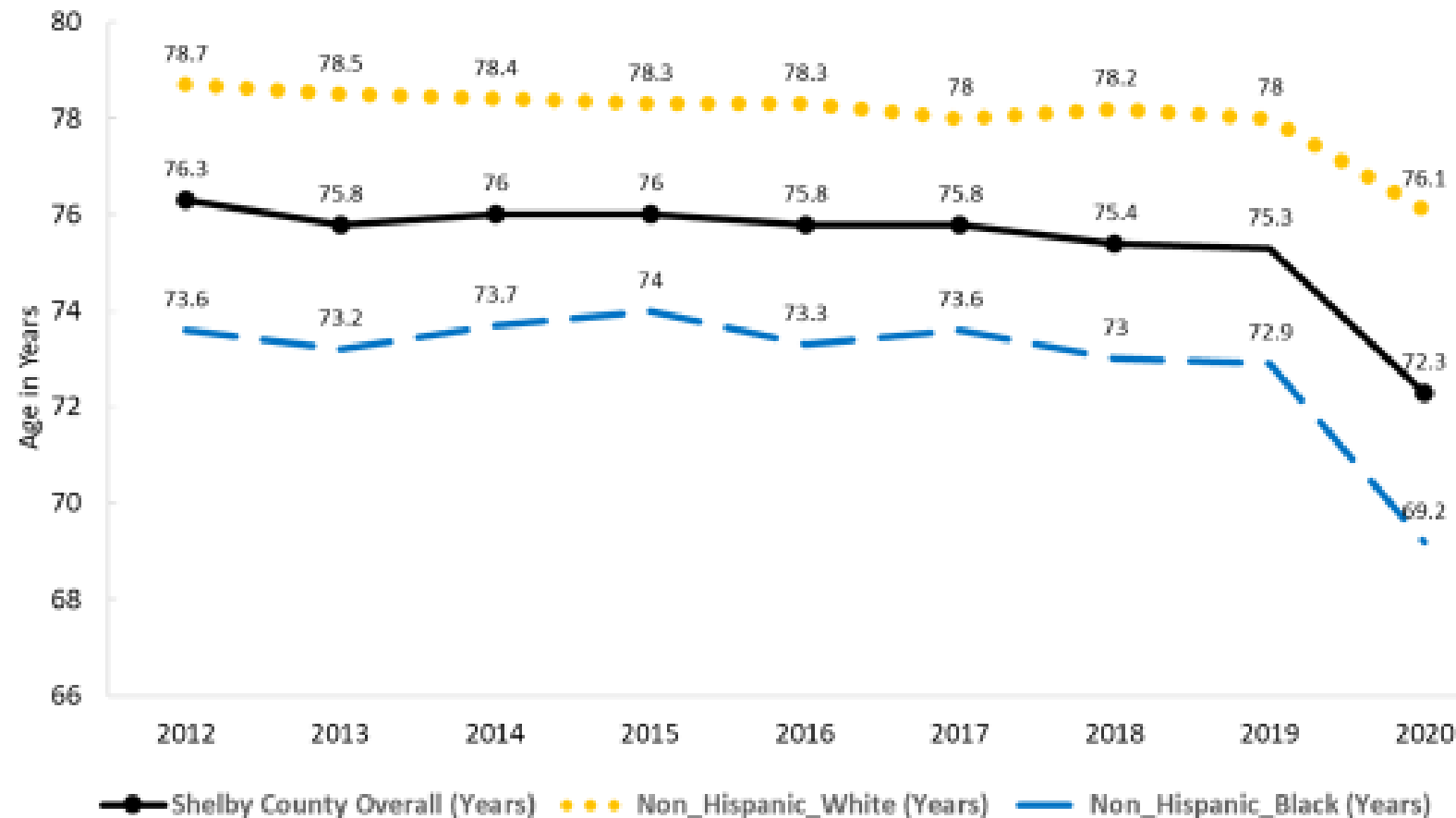
- Key indicator of **overall health** of a population.
- Estimate of the **average years** that a person is **expected to live**.
- High life expectancy can be attributed to **improved living conditions, better health care, and decreased mortality**.

Life Expectancy at Birth, Shelby County, TN 1990-2017



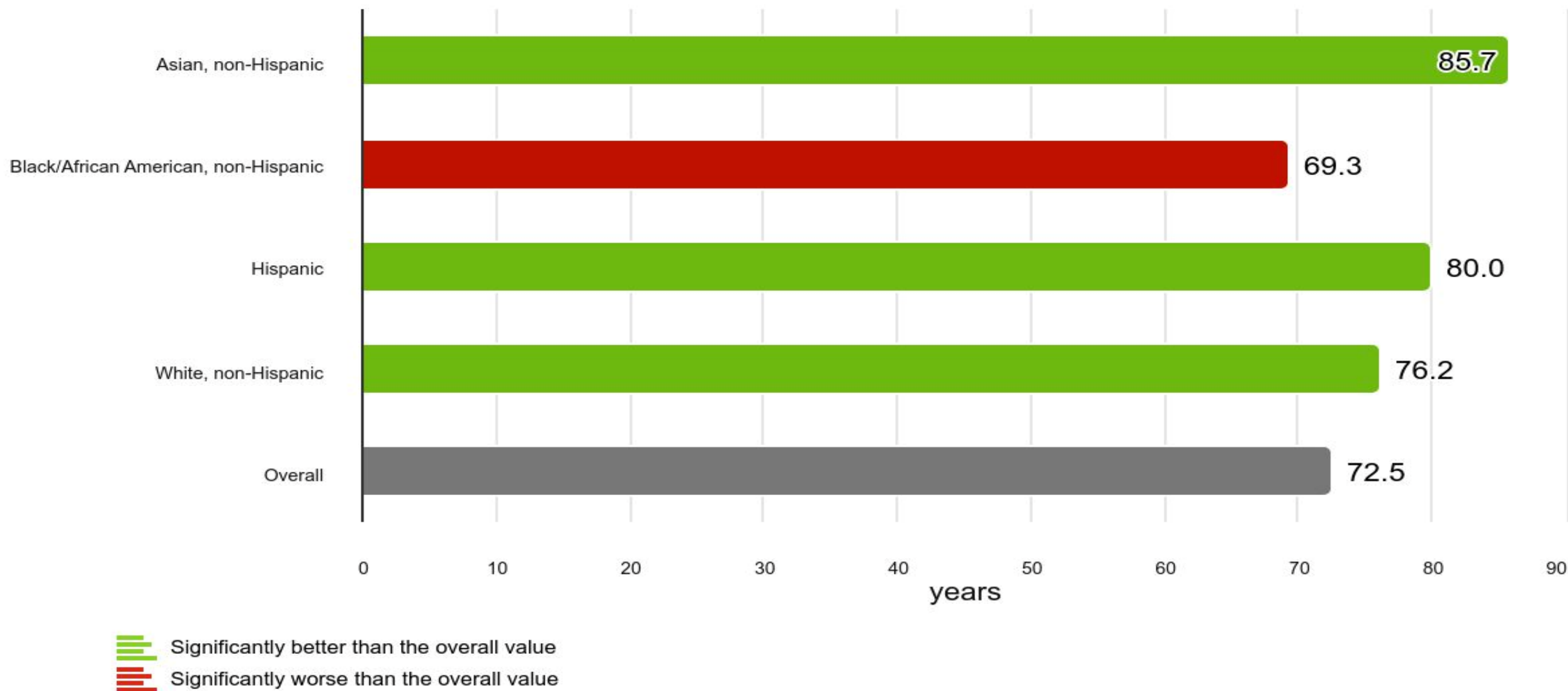
Data Sources: Tennessee Department of Health, Division of Health Statistics, Death Record Data for Shelby County Residents, 1990 – 2017; U.S. Census Populations with Bridged Race Categories: https://www.cdc.gov/nchs/nvss/bridged_race.htm. Prepared by Shelby County Office of Epidemiology and Infectious Diseases, February 2019.

Life Expectancy at Birth, Shelby County, TN 2012-2020



Data Source: Tennessee Department of Health, Office of Policy, Planning and Assessment, Division of Health Statistics, Death Certificate Files for Shelby County Residents, 2012–2020; United States Census, ACS 2016–2020 5-year population estimates. Use of these data does not imply TDH agrees or disagrees with any presentations, analyses, interpretations, or conclusions herein. Map Prepared by Shelby County Health Department (SCHD), Office of Epidemiology and Infectious Diseases.

Life Expectancy by Race/Ethnicity County: Shelby



Life Expectancy, Shelby County, TN 2019-2021

Asians **85.7** years

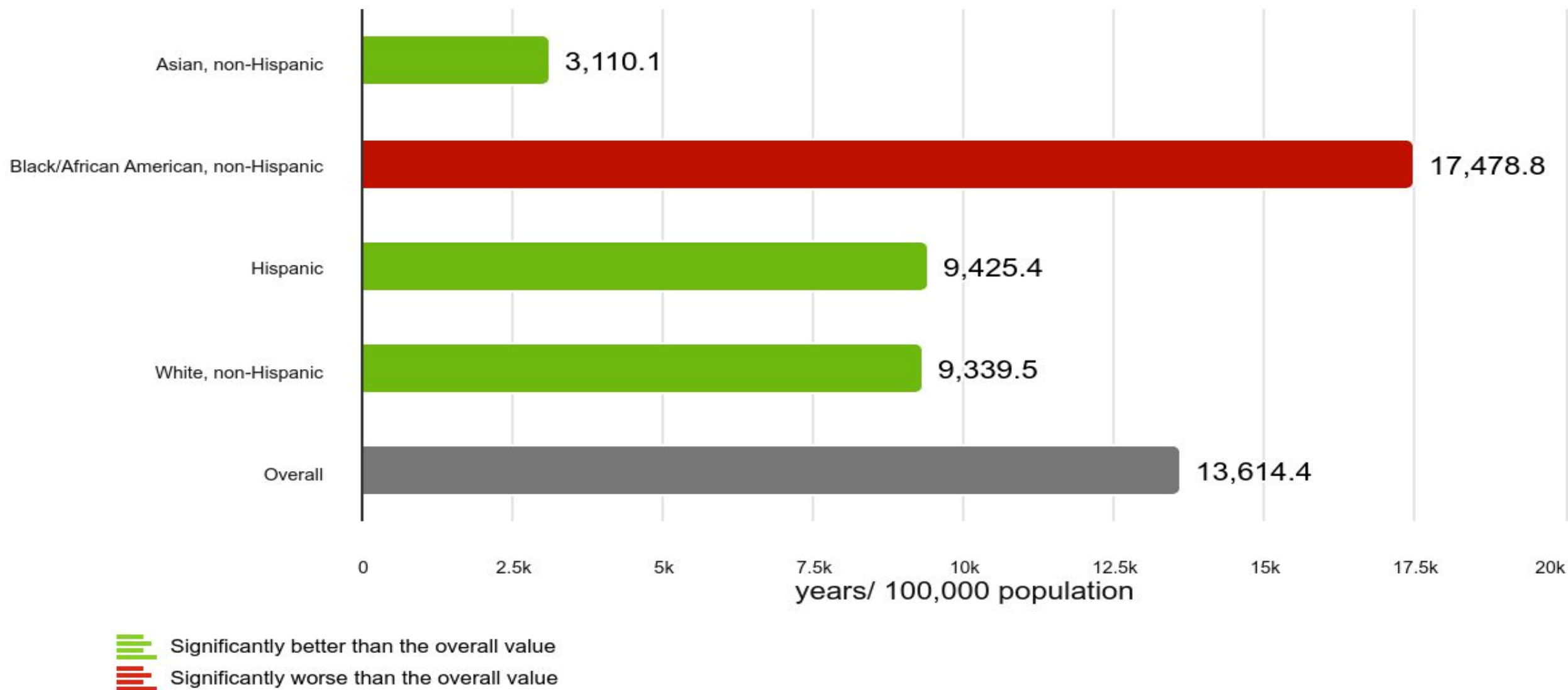
Hispanics **80** years

Whites: **76.2** years

Blacks: **69.3** years

16.4 years gap between Asians and Blacks

Premature Death by Race/Ethnicity County: Shelby



Premature Deaths by Race/Ethnicity

(Years per 100,000 Population)

Asian **3,110** years

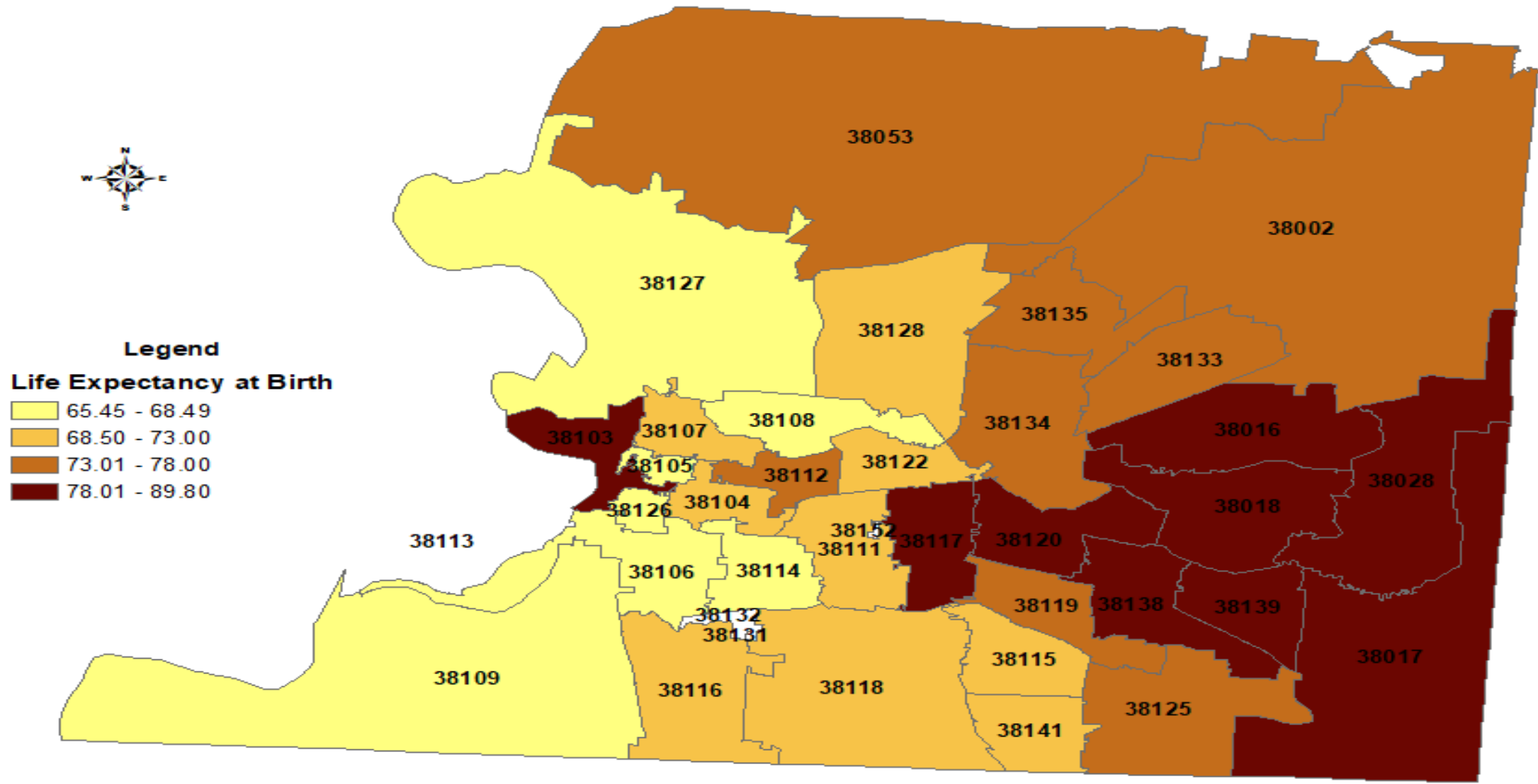
Hispanic **9,425** years

White, non-Hispanic: **9,340** years

Black, non-Hispanic: **17,479** years

Black premature deaths are **5.6 times higher** than Asian

Life Expectancy at Birth in Shelby County TN 2016-2020



Data Source: Tennessee Department of Health, Office of Policy, Planning and Assessment, Division of Health Statistics, Death Certificate Files for Shelby County Residents, 2012–2020; United States Census, ACS 2016–2020 5-year population estimates. Use of these data does not imply TDH agrees or disagrees with any presentations, analyses, interpretations, or conclusions herein. Map Prepared by Shelby County Health Department (SCHD), Office of Epidemiology and Infectious Diseases.

Data Source: Vital Statistics, Death Certificate Data

Life Expectancy Differs by Zip Codes

Zip Codes **38017/38138/38139**

Life expectancy: **78.01-89.80** years

Zip Codes **38106/38126/38108/38127**

Life expectancy: **65.45-68.48** years

Source: <https://www.shelbytnhealth.com/DocumentCenter/View/2020/2019-Shelby-CHNA-Summary>

Zip Codes: 38127/38108/38126/38106

- Frayser, North Memphis, South Memphis
- Inner City, Low Income, Black
- Lowest life-expectancy of any area in Shelby County
- Life expectancy is 65.45 – 68.49 years

Zip Codes: 38138/38139/38017

- Germantown and Collierville
- Suburban, High Income, White
- Above the average life expectancy for the state and nation
- Highest Life expectancy in Shelby County
- Life expectancy is 78.01 – 89.80 years

The **difference in Life Expectancy** between Germantown /Collierville and some areas of Memphis is as high as **24 years**:

89.8 years

vs

65.5 years

Source: <https://www.shelbytnhealth.com/DocumentCenter/View/2020/2019-Shelby-CHNA-Summary>

Data Source: Tennessee Department of Health, Office of Policy, Planning and Assessment, Division of Health Statistics, Death Certificate Files for Shelby County Residents, 2012– 2020; United States Census, ACS 2016-2020 5-year population estimates. Use of these data does not imply TDH agrees or disagrees with any presentations, analyses, interpretations, or conclusions herein. Map Prepared by Shelby County Health Department (SCHD), Office of Epidemiology and Infectious Diseases.

Economic Hardship Index Number (EHI)

Key Social Determinants Critical to One's Health:

- **Unemployment:** The percent of the population over the age of 16 who were unemployed
- **Education:** The percentage of the population over the age of 25 who have less than a high school education
- **Dependency:** The percentage of the population that are under the age of 18 or over the age of 64

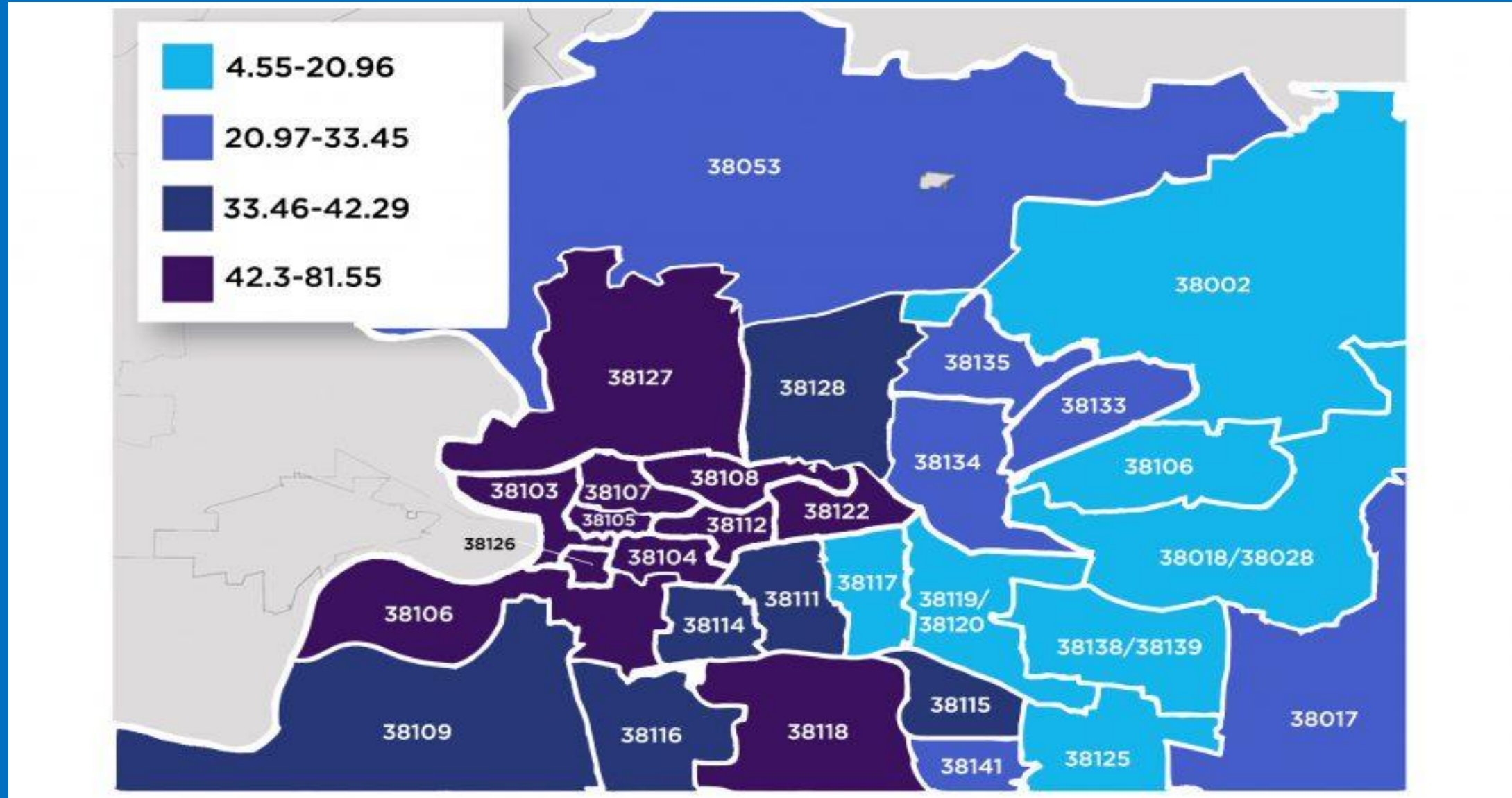
Key Social Determinants Critical to One's Health-continued

- **Income Level:** The per capita income
- **Poverty:** The percent of people living below the federal poverty level
- **Crowded Housing:** The percent of occupied housing units with more than one person per room

Life Expectancy (LE) and Economic Hardship Index (EHI) by Zip code (2015)

Zip code	EHI	Life Expectancy
38138 +38139	15.53 – 24.69	79.22 – 82.59
38017	15.53 – 24.69	79.22 – 82.59
38106+38126	63.05 – 97.84	69.01 – 71.58
38107+38108	63.05 – 97.84	69.01 – 71.58

Economic Hardship Index, Shelby County, 2011-2015



Source: State of the State Health Brief for Memphis and Shelby County, *Better Tennessee*, May 21, 2018, Blue Cross/Blue Shield of Tennessee, Ashley Brantley editor.



Public Health
Prevent. Promote. Protect.

Shelby County Health Department

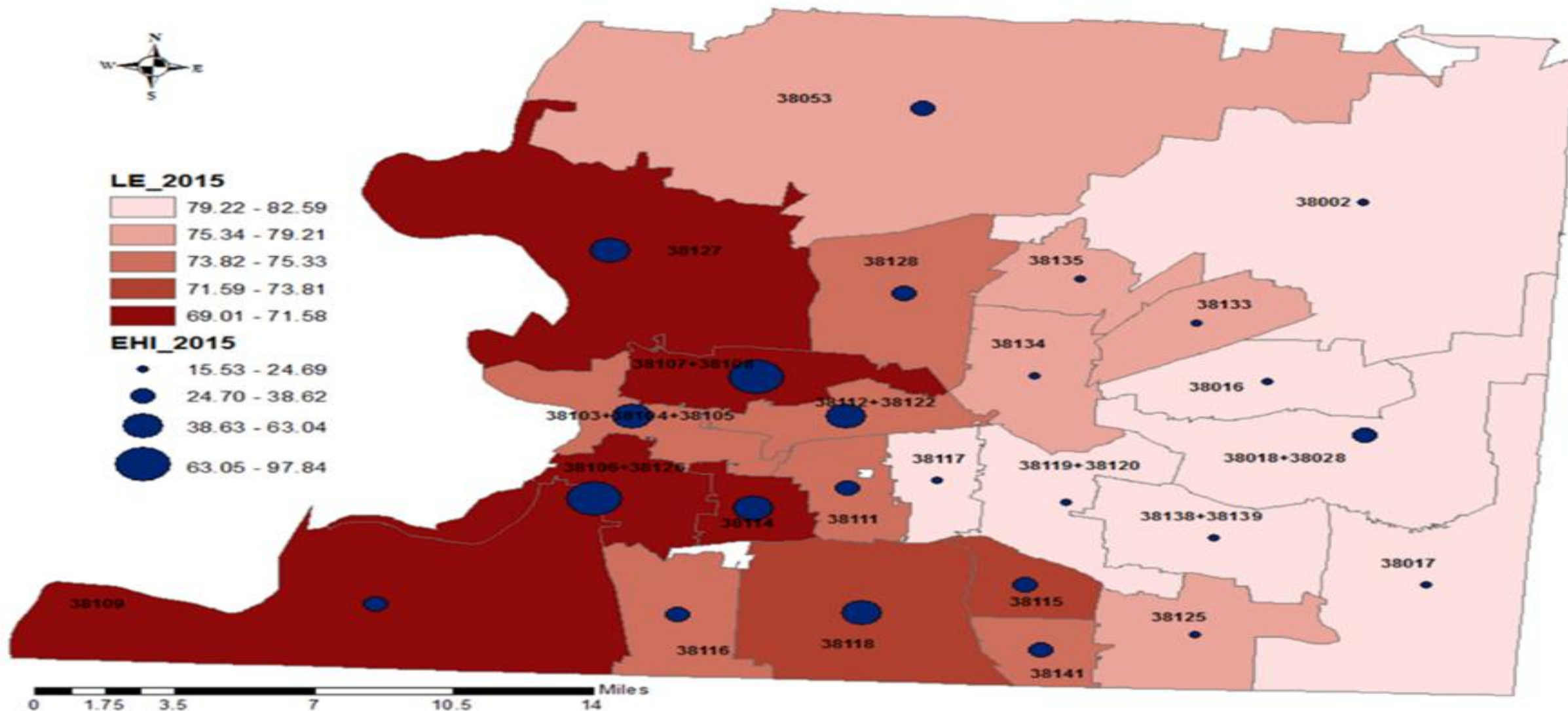
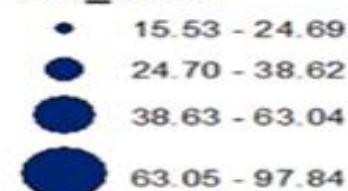
CORRELATION BETWEEN EHI AND LE IN SHELBY COUNTY TN ZIP CODES 2015



LE_2015



EHI_2015



0 1.75 3.5 7 10.5 14 Miles

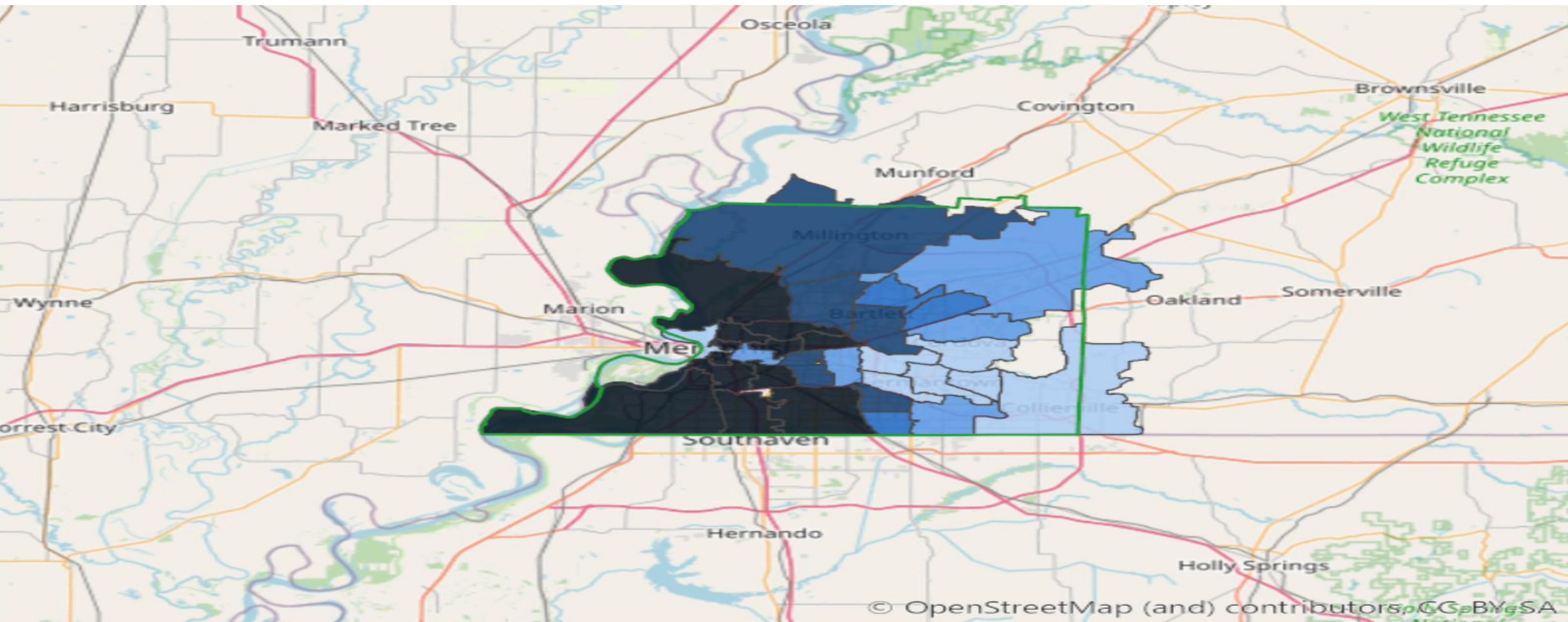
Map by Office of Epidemiology and Infectious Diseases- Ogari

Data source- Vital statistics Death Data TDH and American Community Survey 5-year Estimates

2024 Health Equity Index

Zip Code: Shelby

Measurement Period: 2024
Data Source: Conduent Healthy Communities Institute



MAP LEGEND

greater need →



Index values are not comparable across measurement periods. Index values and rankings are specific to a measurement period, showing the relative ranking of a location in comparison to other similar locations at that time.

2024 Health Equity Index

(Formerly SocioNeeds Index)

Created by Conduent Healthy Communities Institute, is a **measure of socioeconomic need** that is correlated with poor health outcomes.

All zip codes, counties, and county equivalents in the United States are given an index value from **0 (low need) to 100 (high need)**.

2024 Health Equity Index Value

Zip Code	Index Value
38138	5.2
38139	1.2
38017	4.2
38106	98.4
38126	99.2
38108	97.5
38127	90.5

Socioeconomic Need

The Socioeconomic Need in Zip Codes 38106/38126/38127/38108 is more than **90 X greater** than that of Zip Code 38319

Shelby County Poorest Communities Income Summary

Zip Code	Neighborhood	Income Level	Percent of Children below federal poverty line	Rate of childhood Poverty
38126	LeMoyne-Owen College/Mississippi Blvd	Lower than 99.8% of U.S. Neighborhoods	74.6%	Higher than 99.2% of U.S. Neighborhoods
38106	E McLemore Ave/ Mississippi Blvd	Lower than 97.2% of U.S. Neighborhoods	72.9%	Higher than 99.0% of U.S. Neighborhoods
38108	Hollywood	Lower than 99.4% of U.S. Neighborhoods	90.7%	Higher than 99.9% of U.S. Neighborhoods
38107	N Bellevue Blvd/Smith Ave	Lower than 96.0% of U.S. Neighborhoods	78.6%	Higher than 99.4% of U.S. Neighborhoods

Source: (Savides, Steven (June 18, 2003). "How the Web-savvy retiree picks a new hometown". *The Christian Science Monitor*. *The Christian Science Monitor*. Retrieved 29 September 2015)

Source: Center for Urban and Community Research at Lemoyne-Owen College, Research on Health Disparities in Minority Communities in Shelby County, TN,